



GRANDSTREAMBANGLADESH
CONNECTING THE WORLD

PRODUCT CATALOG





GRP2612(P/W) & GRP2613

- 4/6 lines, 2/3 SIP accounts.
- Wi-Fi, Swappable Faceplate
- Encryption security
- Up to 16/24 digital BLF Keys



GRP2614

- 4 lines, 4 SIP accounts.
- Wi-Fi, Swappable Faceplate
- Encryption security
- Dual LCD screens with digital BLF



GRP2615

- 16 SIP accounts, 4.3 LCD.
- Wi-Fi, Swappable Faceplate.
- Encryption security.
- Available Extension Module.



GRP2616

- 6 SIP accounts, 4.3 LCD.
- Additional 2.4 inch Screen
- Wi-Fi, Swappable Faceplate
- Integrated Bluetooth

Basic IP Phones



GXP1610/GXP1615

- 2 lines, 1 SIP account, (Non-PoE/PoE).
- 132x48 LCD screen.
- 3 XML, 3-way conf.



GXP1625

- 2 lines, 2 SIP account,
- Integrated PoE
- 132x48 LCD screen.
- 3 XML, 3-way conf.



GXP1628

- 2 lines, 2 SIP accounts,
- PoE, 132x48.
- Backlit LCD, 3XML.
- Gigabit Ports, 8 BLF Keys.



GXP1630

- 3 lines, 3 SIP accounts,
- PoE, 132x64.
- Backlit LCD, 3 XML.
- Gigabit Ports, 8 BLF Keys.

Mid-Range IP Phones



GXP1760W

- 6 lines, 3 SIP accounts.
- 4 XML, 5-way conf. PoE.
- WiFi-enabled.
- HD wideband audio.
- Built-in USB port.



GXP1780/GXP1782

- 8 lines, 4 SIP accounts.
- 4 XML, 5-way conf. PoE.
- HD wideband audio.
- Built-in USB port.



GXP2130

- 3 lines, 3 SIP accounts.
- 4-way conference.
- PoE, BLF dial keys.



GXP2135

- 8 lines, 4 SIP accounts.
- 4-way conference.
- Dual switched, built-in PoE.

High End IP Phones & Extension Modules



GXP2140

- 4 lines, 4 SIP accounts.
- 5-way conf.
- PoE, Bluetooth.



GXP2160

- 6 lines, 6 SIP accounts.
- 5-way conf.
- PoE, Bluetooth.



GXP2170

- 12 lines, 6 SIP accounts.
- 5-way conf.
- PoE, Bluetooth.

Mobile App



Grandstream Wave

- SIP-based softphone.
- Requires Android 4.0 & iOS.
- Supports G.711µ/a, G722 (HD-audio).

Multimedia IP Video Phones



GXV3240

- 6 lines, 6 SIP accounts.
- Android 4.2
- 4.3" Touchscreen.
- 6-way audio conf. & 3-way video conf.



GXV3370

- 16 lines, 16 SIP accounts.
- Android 7.0
- 7" Touchscreen.
- 7-way audio conf. & 3-way video conf.



GXV3380

- 16 lines, 16 SIP accounts.
- Android 7.0
- 8" Touchscreen.
- 7-way audio conf. & 3-way 1080p video conf.



GXV3350

- 16 lines, 16 SIP accounts.
- Android 7.0,
- 5" Captative touchscreen.
- 6-way audio conf. & 3-way video conf.

SIP Intercom Speaker



GSC3505/GSC3510

- High fidelity speaker / Full Duplex 8W speakerphone.
- Features SIP paging, multicast paging etc.
- Integrated Wi-Fi & Bluetooth
- Web-UI access for control

Wi-Fi Phones



WP820

- Integrated WiFi & Bluetooth.
- HD Voice.
- 7.5 hour talk time, 150-hour standby.

Expansion Module



GXP2200EXT

- 128x384 LCD Display
- 20 Dual Color Buttons
- 40 Contacts
- Pairs With GXP2140, GXP2170 & GXV3240



GBX20EXT

- 4.3" TFT Color LCD
- 20 Buttons, Two pages
- 40 Contacts
- Pairs With GRP2645 & GXV3350

Analog VoIP Gateways



GXW4104/4108

- 4/8 FXO Ports.
- Supports 3-way voice conferencing.



GXW4216/4224/4232/4248

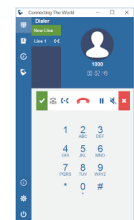
- 16/24/32/48 FXS Ports.
- Supports 3-way voice conferencing.



GXW4500 (T1/E1/J1)

- Support 30, 60 or 120 concurrent calls
- 1, 2 or 4 Software configurable E1/T1/J1 ports

Desktop Apps



Grandstream Affinity

- SIP- based deskphone
- Supports on windows 8 or higher
- Supported devices are GXP17XX & GXP21XX

IP PBX Appliances



UCM6202/6204/6208

- 2/4/8 FXO ports, 2 FXS.
- Ports 500/500/800 Users.
- 50/75/100 concurrent calls.
- PoE/USB/SD Support.



UCM6510

- 1 T1/E1/J1, 2 FXO / FXS
- 2000 users, 200 concurrent calls
- Integrated NAT router, Gigabit network ports with PoE/USB/SD support.



HA100

- Connects and constantly monitors two UCM6510 together for high availability.



IPVT10

- Enterprise Grade On-Prem Collaboration Server.
- 35 - 300 participants.
- 16- 120 video feeds per session.
- Video and audio recording with 500GB local storage.

On-Premise VC Server

Cloud Collaboration



IPVideoTalk

- 1080p HD video resolutions, HD audio quality.
- 8-100 participants, 3-8 Video Feeds.
- Cloud Recording/Storage.

Business Conferencing (Video/Audio)



GVC3200/3202 Video Conf.

- Supports SIP/Bluetooth/USB
- 1080p Full-HD video, 9/3-way video conference.
- Support 3/2 HDMI Output



GVC3210 Video Conf.

- 4K Resolution, 16 Megapixel CMOS, Integrated dual band WiFi.
- Lens ~90° field of view, ePTZ Integrated.
- 1*HDMI In, 2*HDMI Out, 2*USB.



GAC2500 Audio Conf.

- 6 lines, 6 SIP accounts, 7-way voice conf. Runs Android 4.4 and offers full access to the GooglePlay Store and all Android apps, such as Skype, Google Hangouts etc.

Analog Telephone Adaptors



HT801/802/812/814/818

- 1/2/2/4/8 Lines.
- 1/2/2/4/8 FXS ports, 3-way conf.
- Integrated NAT Router.
- No/No/Yes/Yes/Yes.



HT813

- Supports 2 SIP profiles through 1 FXS and 1 FXO port.
- Dual 100Mbps LAN and WAN ports.
- 3-way voice conferencing per port.

Video/Voice Door Phone



GDS3710

- 1080p Full HD Video, PoE, 2x Alarm-in.
- 2x Alarm-Out, RS485, Wiegand Input/Output.



GDS3705

- HD audio, 1.5m Mic. 3m speaker range.
- Integrated RFID card reader, PoE, Alarm in, Alarm out.

Gigabit Router & Indoor/Outdoor Access Points



GWN7600/7610

- 16 SSIDs per radio. Support 450+ / 250+ devices. POE/ PoE-PoE+, 2x2: 13x3.
- MIMO Technology, 165 / 175 Meter range, 50 AP embedded controller.



GWN7600LR

- 450+ WiFi clients, 30 AP embedded controller, beam-forming technology.
- 300-meter coverage range.



GWN7000

- 7 Gigabit ports (2 WAN + 5 LAN).
- VPN including PPTP, L2TP/IPSec and OpenVPN.
- Embedded controller to manage 300+ GWN WiFi APs.



GWN7630

- 2 Gigabit wireline ports
- Dual-band 4x4:4 MU-MIMO
- Up to 175-meter coverage
- Supports 200+ concurrent Wi-Fi clients



The Grandstream Device Management System (GDMS) offers a centralized interface to configure, provision, manage, monitor and troubleshoot large deployments of Grandstream endpoints in batches by site, group or model.



*On Applicable Products