



Face Recognition Terminal

Quick Start Guide

UD07929B-E

1 Installation

Type: Wall Mounting and Base Mounting

Before you start:

According to the baseline on the mounting template, stick the mounting template on the wall or other surface, 1.1 meters higher than the ground.

Steps:

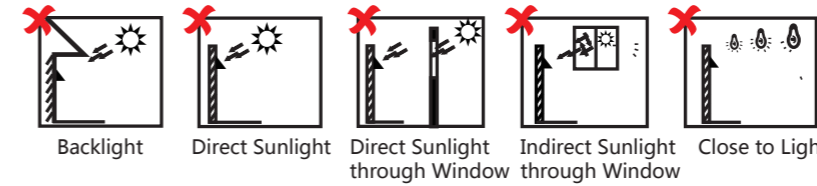
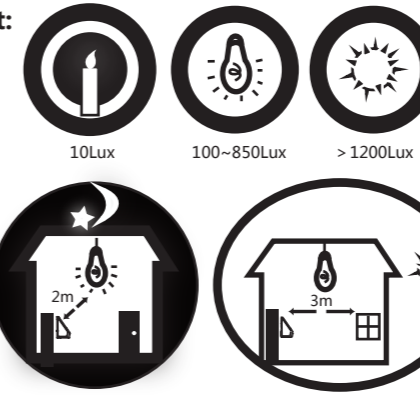
- 1 Drill holes on the wall or other surface according to the supplied mounting template and install the gang box (80mm×80mm).
- 2 Use two supplied screws to secure the mounting plate on the gang box.
- 3 Remove the two screws at the bottom of the device.
- 4 Align the terminal with the mounting plate and buckle them together.
- 5 Use a hex wrench to fasten the two screws at the bottom.

Notes:

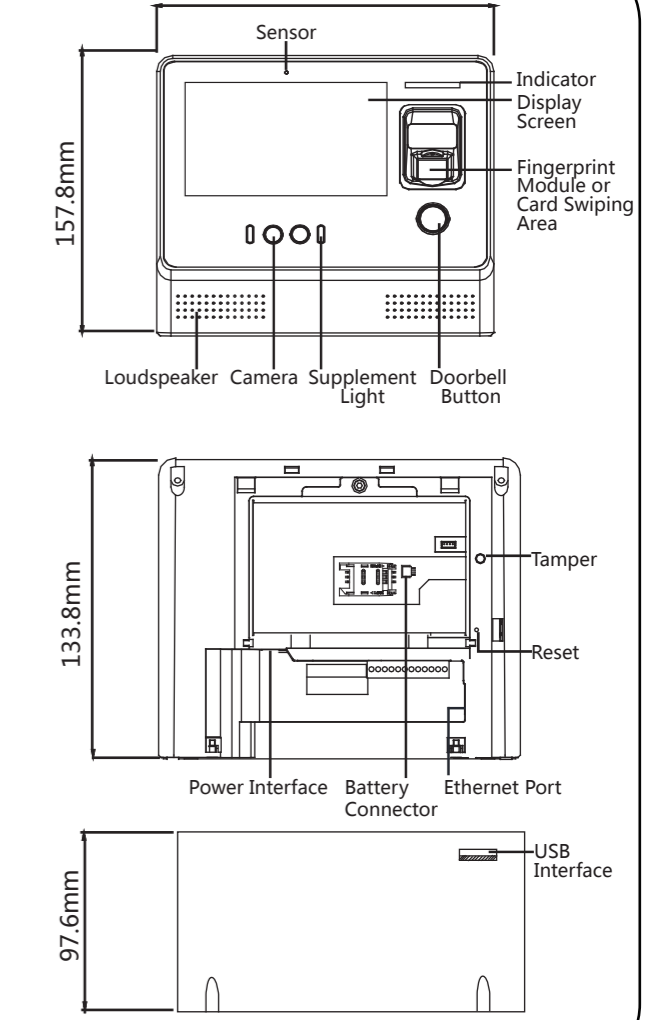
1. The installation height here is the recommended height. You can change it according to your actual needs.
2. You can also install the device on the wall or other places without the gang box. For details, refer to the *User Manual*.
3. For easy installation, drill holes on mounting surface according to the supplied mounting template.

Installation Environment:

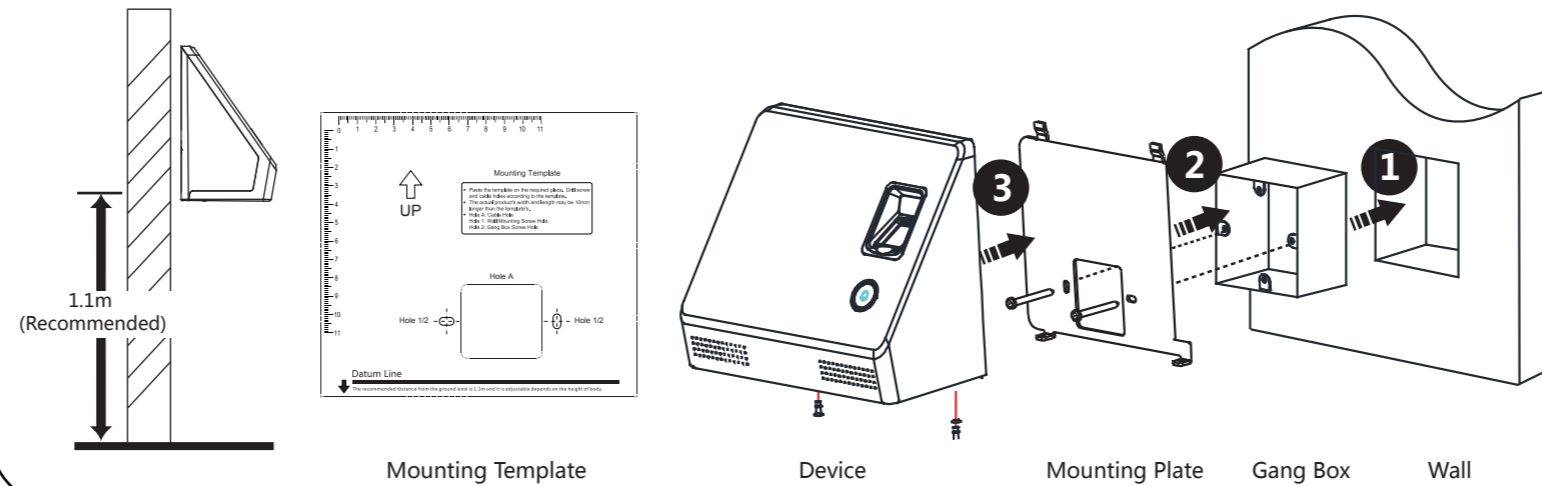
- Install the device at least 2 meters away from the light, and at least 3 meters away from the window or door.
- Avoid backlight, direct and indirect sunlight.



Dimensions:



Note: The figures are for reference only.



©2019 Hangzhou Hikvision Digital Technology Co., Ltd. It includes instructions on how to use the Product. The software embodied in the Product is governed by the user license agreement covering that Product. About this Manual This Manual is subject to domestic and international copyright protection. Hangzhou Hikvision Digital Technology Co., Ltd. ("Hikvision") reserves all rights to this manual. This manual cannot be reproduced, changed, translated, or distributed, partially or wholly, by any means, without the prior written permission of Hikvision. Trademarks

HIKVISION and other Hikvision marks are the property of Hikvision and are registered trademarks or the subject of applications for the same by Hikvision and/or its affiliates. Other trademarks mentioned in this manual are the properties of their respective owners. No right of license is given to use such trademarks without express permission.

Legal Disclaimer
TO THE MAXIMUM EXTENT PERMITTED BY APPLICABLE LAW, THE PRODUCT DESCRIBED, WITH ITS HARDWARE, SOFTWARE AND FIRMWARE, IS PROVIDED "AS IS", WITH ALL FAULTS AND ERRORS, AND HIKVISION MAKES NO WARRANTIES, EXPRESS OR IMPLIED, INCLUDING WITHOUT LIMITATION, MERCHANTABILITY, SATISFACTORY QUALITY, FITNESS FOR A PARTICULAR PURPOSE, AND NON-INFRINGEMENT OF THIRD PARTY. IN NO EVENT WILL HIKVISION, ITS DIRECTORS, OFFICERS, EMPLOYEES, OR AGENTS BE LIABLE TO YOU FOR ANY SPECIAL, CONSEQUENTIAL, INCIDENTAL, OR INDIRECT DAMAGES, INCLUDING, AMONG OTHERS, DAMAGES FOR LOSS OF BUSINESS PROFITS, BUSINESS INTERRUPTION, OR LOSS OF DATA OR DOCUMENTATION, IN CONNECTION WITH THE USE OF THIS PRODUCT, EVEN IF HIKVISION HAS BEEN ADVISED OF THE POSSIBILITY OF SUCH DAMAGES.

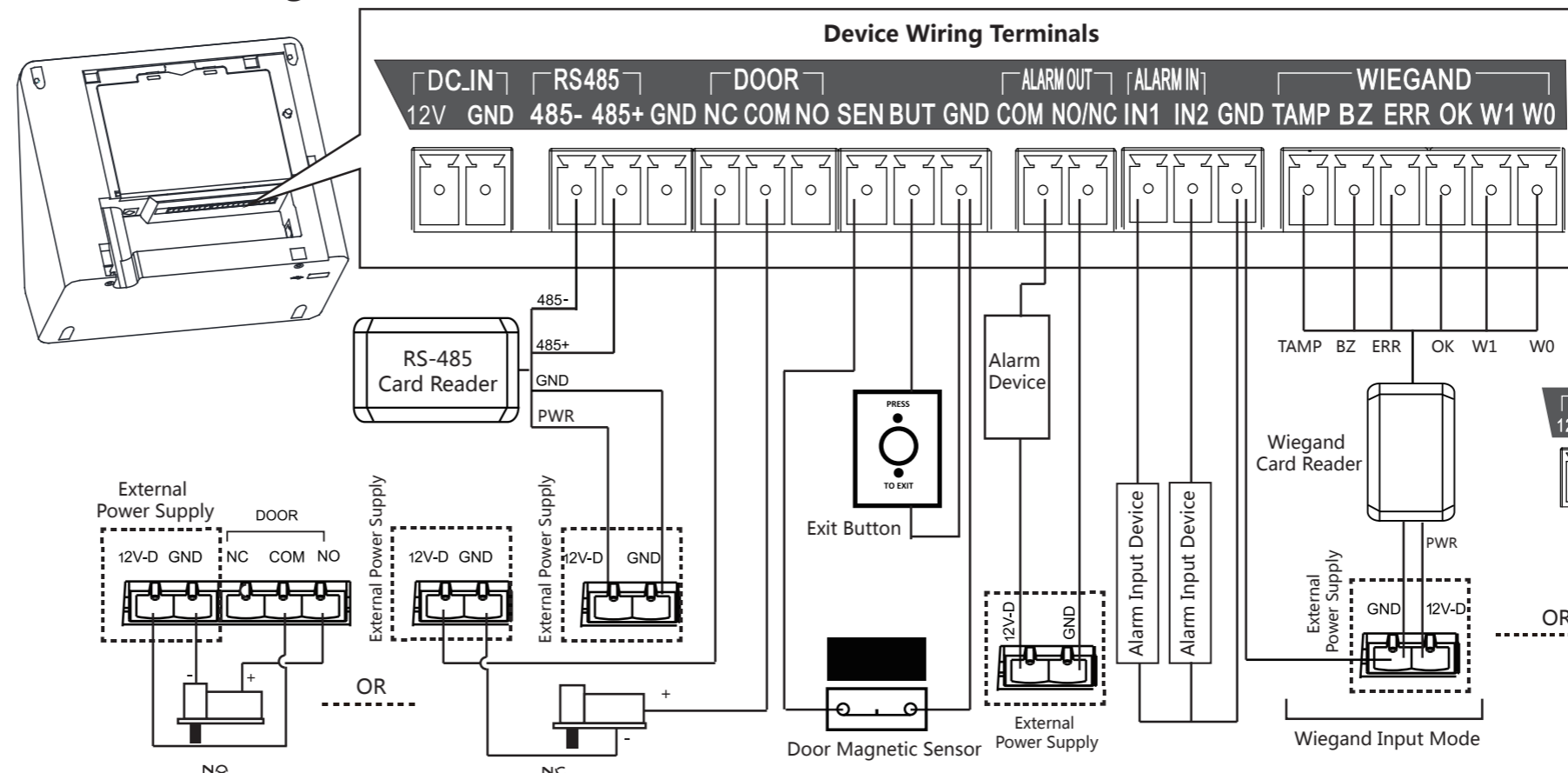
REGARDING TO THE PRODUCT WITH INTERNET ACCESS, THE USE OF PRODUCT SHALL BE WHOLLY AT YOUR OWN RISKS. HIKVISION SHALL NOT TAKE ANY RESPONSIBILITIES FOR ABNORMAL OPERATION, PRIVACY LEAKAGE OR OTHER DAMAGES RESULTING FROM CYBER ATTACK, HACKER ATTACK, VIRUS INSPECTION, OR OTHER INTERNET SECURITY RISKS; HOWEVER, HIKVISION WILL PROVIDE TIMELY TECHNICAL SUPPORT IF REQUIRED.

SURVEILLANCE LAWS VARY BY JURISDICTION. PLEASE CHECK ALL RELEVANT LAWS IN YOUR JURISDICTION BEFORE USING THIS PRODUCT IN ORDER TO ENSURE THAT YOUR USE CONFORMS THE APPLICABLE LAW. HIKVISION SHALL NOT BE LIABLE IN THE EVENT THAT THIS PRODUCT IS USED WITH ILLEGITIMATE PURPOSES.

Data Protection
During the use of device, personal data will be collected, stored and processed. To protect data, the development of Hikvision devices incorporates privacy by design principles. For example, for device with facial recognition features, biometrics data is stored in your device with encryption method; for fingerprint device, only fingerprint template will be saved, which is impossible to reconstruct a fingerprint image.

As data controller, you are advised to collect, store, process and transfer data in accordance with the applicable data protection laws and regulations, including without limitation, conducting security controls to safeguard personal data, such as, implementing reasonable administrative and physical security controls, conduct periodic reviews and assessments of the effectiveness of your security controls.

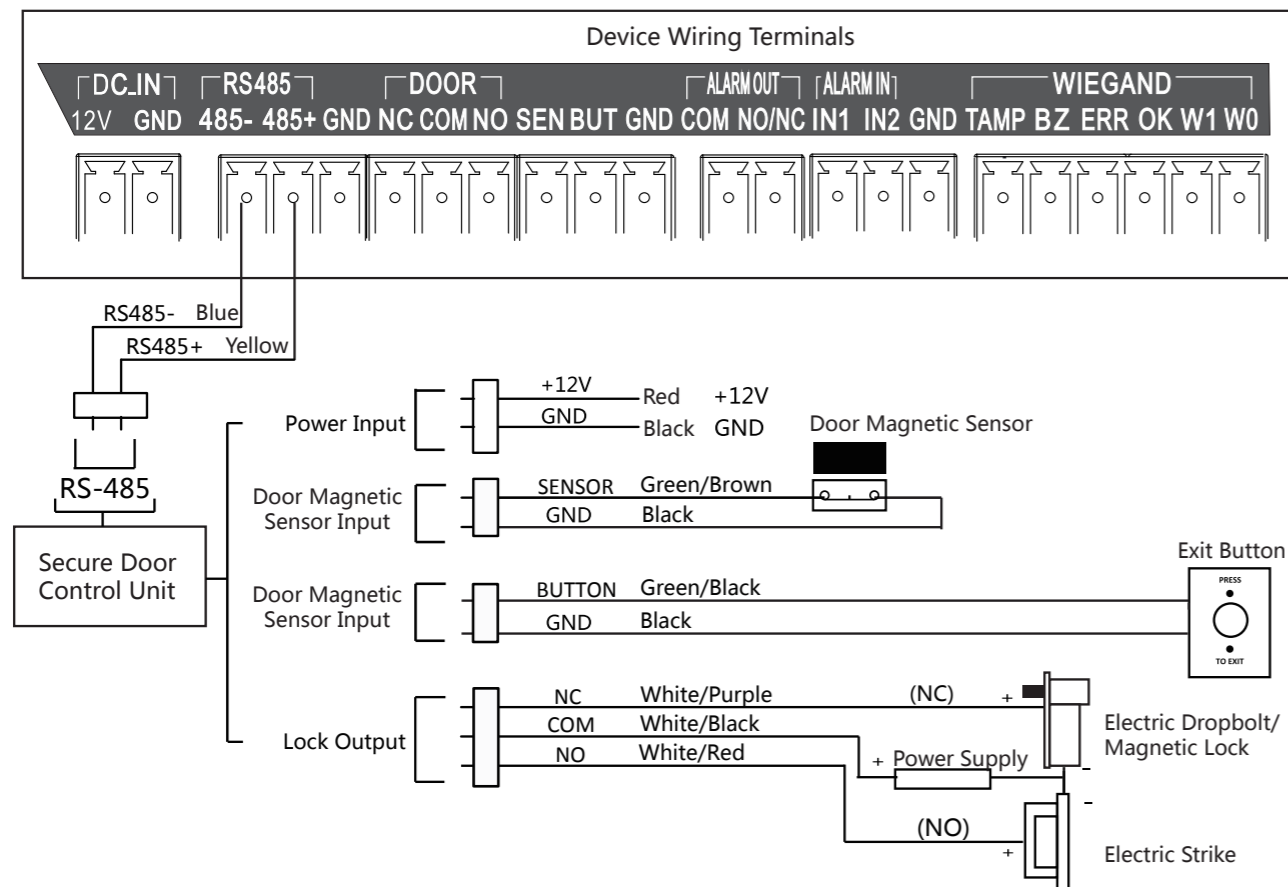
2.1 Device Wiring (Without Secure Door Control Unit)



Notes:

- The device can transmit the authentication information to the access controller via this mode.
- The Min. power cable's diameter: 18 AWG.
- The power cable's rated current is 3 A, while other cable's rated current is 1 A.

2.2 Device Wiring (With Secure Door Control Unit)



Note: The secure door control unit should connect to an external power supply separately.

3 Activation

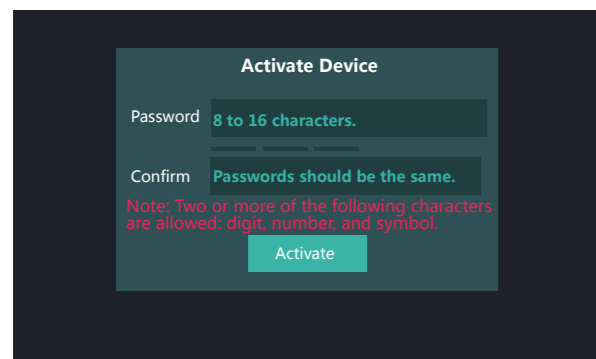
Power on the device and wire the network cable after installation. You should activate the device before the first installation. You should activate the device before the first

Activating via Device

If the device is not activated yet, it will enter the Activate Device page after powered on.

1. Create a password and confirm the password.
2. Tap **Activate** to activate the device.

Note: For other activation methods, see the device user manual.



STRONG PASSWORD RECOMMENDED—
We highly recommend you create a strong password of your own choosing (using a minimum of 8 characters, including upper case letters, lower case letters, numbers, and special characters) in order to increase the security of your product. And we recommend you reset your password regularly, especially in the high security system, resetting the password monthly or weekly can better protect your product.

4 Adding Face Information

1. Tap the settings icon at the lower right corner of the initial page and input the activation password to enter the main page.
2. Enter the User Management page, tap + to enter the Add User page.
Note: Some device models do not support the fingerprint recording function.

4. Tap **Face** and collect the face information according to the instructions. You can view the captured picture at the upper right corner of the page. Make sure the face picture is in good quality and size. For details about the tips and positions when collecting or comparing the face picture, see the contents on the right.

5. If the picture is in good condition, tap **Save** to save the picture. Or tap **Try Again** to take another face picture.
6. Tap ✓ to save the settings. Go back to the initial page to start authentication. For other authentication methods, see the device user manual.

Recommended:

Use 1:1 Face Matching when the face is hard to recognize. Use other authentication methods if the device is affected by the light or other items.

1:1 Matching: The device will compare the captured face picture with the ones in the database.

1:N Matching: The device will compare the captured face picture with the input employee ID linked face picture.

- Biometric recognition products are not 100% applicable to anti-spoofing environments. If you require a higher security level, use multiple authentication modes.
- If you adopt multiple authentication modes, you should authenticate other methods before authenticating face.

Tips When Collecting/Comparing Face Picture

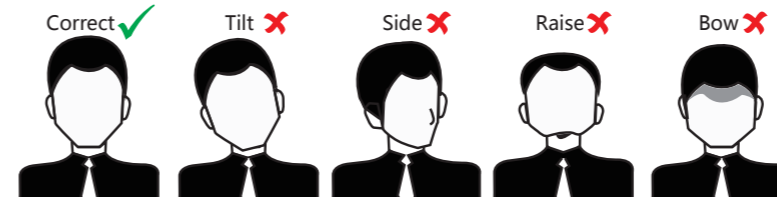
Expression

- Keep your expression naturally when collecting or comparing face pictures, just like the expression in the picture on the right.
- Do not wear hat, sunglasses, or other accessories that can affect the facial recognition function.
- Do not make your hair cover your eyes, ears, etc. and heavy makeup is not allowed.



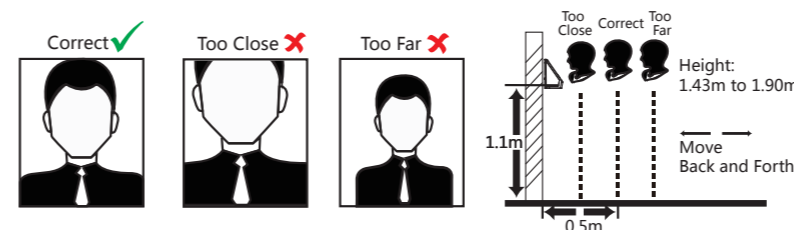
Posture

In order to get a good quality and accurate face picture, position your face looking at the camera when collecting or comparing face pictures.

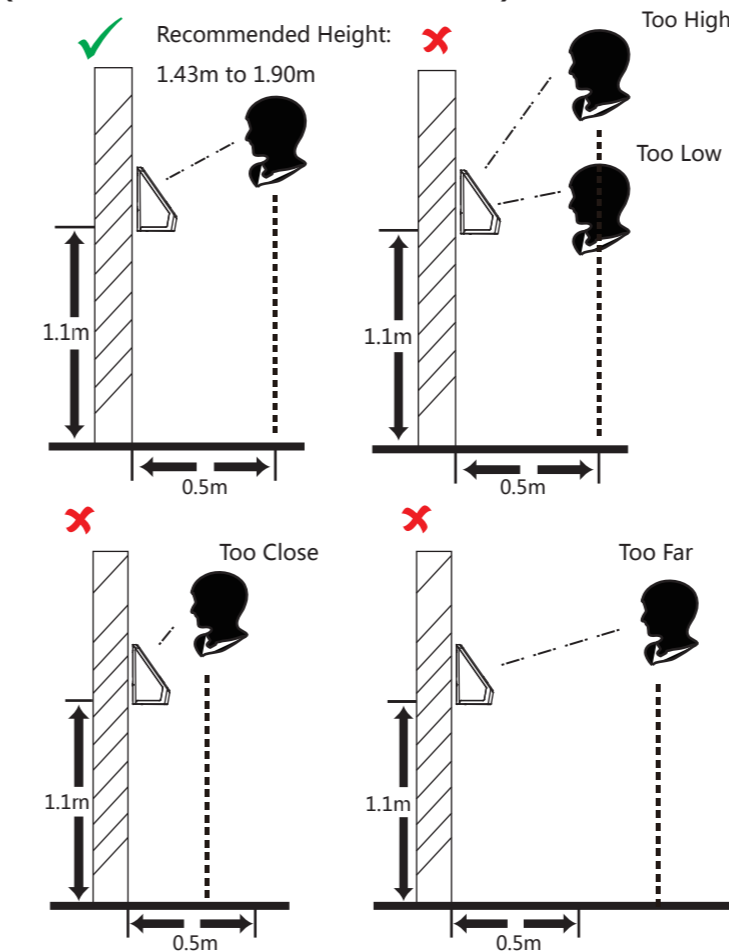


Size

Make sure your face is in the middle of the collecting window.



Positions When Collecting/Comparing Face Picture (Recommended Distance: 0.5m)



This manual is applied for face recognition terminal.

| Series | Models |
|--|----------------------------|
| Face Recognition Terminal (Without Fingerprint Module) | DS-K1T605M DS-K1T605E |
| Face Recognition Terminal (With Battery) | DS-K1T605MF-B |
| Face Recognition Terminal (With Fingerprint Module) | DS-K1T605MF DS-K1T605EF |

Regulatory Information

FCC Information

Please take attention that changes or modification not expressly approved by the party responsible for compliance could void the user's authority to operate the equipment. **FCC compliance:** This equipment has been tested and found to comply with the limits for a Class B digital device, pursuant to part 15 of the FCC Rules. These limits are designed to provide reasonable protection against harmful interference in a residential installation. This equipment generates, uses and can radiate radio frequency energy and, if not installed and used in accordance with the instructions, may cause harmful interference to radio communications. However, there is no guarantee that interference will not occur in a particular installation. If this equipment does cause harmful interference to radio or television reception, which can be determined by turning the equipment off and on, the user is encouraged to try to correct the interference by one or more of the following measures:

- Reorient or relocate the receiving antenna.
 - Increase the separation between the equipment and receiver.
 - Connect the equipment into an outlet on a circuit different from that to which the receiver is connected.
 - Consult the dealer or an experienced radio/TV technician for help.
- This equipment should be installed and operated with a minimum distance 20cm between the radiator and your body.

FCC Conditions

This device complies with part 15 of the FCC Rules. Operation is subject to the following two conditions:

1. This device may not cause harmful interference.
2. This device must accept any interference received, including interference that may cause undesired operation.

EU Conformity Statement



This product and - if applicable - the supplied accessories too are marked with "CE" and comply therefore with the applicable harmonized European standards listed under the RE Directive 2014/53/EU, the EMC Directive 2014/30/EU, the RoHS Directive 2011/65/EU.



2006/66/EC (battery directive): This product contains a battery that cannot be disposed of as unsorted municipal waste in the European Union. See the product documentation for specific battery information. The battery is marked with this symbol, which may include lettering to indicate cadmium (Cd), lead (Pb), or mercury (Hg). For proper recycling, return the battery to your supplier or to a designated collection point. For more information see: www.recyclethis.info



2012/19/EU (WEEE directive): Products marked with this symbol cannot be disposed of as unsorted municipal waste in the European Union. For proper recycling, return this product to your local supplier upon the purchase of equivalent new equipment, or dispose of it at designated collection points. For more information see: www.recyclethis.info

- (1) 이 기기는 가정용으로 전자파적합등록을 한 기기로서 주거지역에서는 물론 모든 지역에서 사용할 수 있습니다.
- (2) 당해 무선설비는 전파혼신 가능성이 있으므로 인명안전과 관련된 서비스는 할 수 없음.

Use only power supplies listed in the user instructions:

| Model | Manufacturer | Standard |
|--------------------|--|----------|
| C2000IC12.0-24P-DE | MOSO Power Supply Technology Co., Ltd. | CEE |
| C2000IC12.0-24P-GB | MOSO Power Supply Technology Co., Ltd. | BS |
| ADS-24S-12 1224GPG | Shenzhen Honor Electronic Co., Ltd. | CEE |



Scan the QR code to get the user manual for detailed information. Note that mobile data charges may apply if Wi-Fi is unavailable.